

KNIGHT, KAVANAGH & PAGE



Central Lancashire Open Space & Playing Pitch Study

Claire Fallon - Principal Consultant
Jonathan Gaukroger - Consultant



Agenda



- ◀ Purpose
- ◀ Methodology, approach and scope
- ◀ Open space study
 - ◁ Central Lancashire key findings
 - ◁ Local Authority outputs
 - ◁ Identifying provision standards
 - ◁ Recommendations
- ◀ Playing pitch strategy (PPS)
 - ◁ Central Lancashire key findings
 - ◁ Local Authority outputs
 - ◁ Strategy and recommendations
- ◀ What Next?



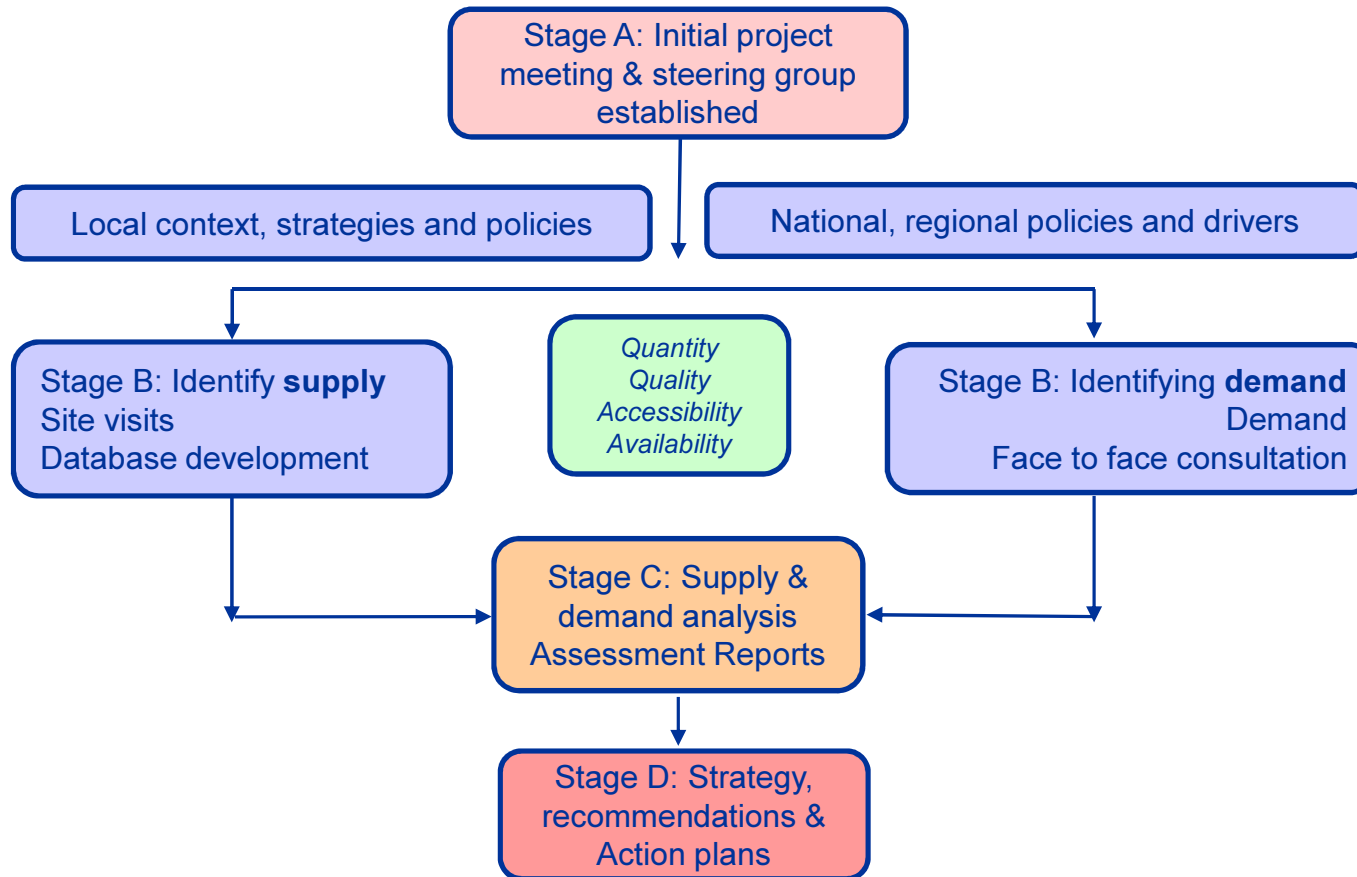
Purpose



- ◀ To provide a strategic framework which ensures that the provision of open space and outdoor sports meet local and community needs of existing and future residents and visitors to the Central Lancashire area. It will provide robust and objective justification for future provision throughout Central Lancashire.



Methodology overview



Methodology



- ◀ Produced in accordance with NPPF to inform local planning policy.
- ◀ Companion Guidance to PPG17 and Fields in Trust
- ◀ Compliant with Sport England's PPS Guidance:
 - ◁ Stage A: Prepare and trailer the approach
 - ◁ Stage B: Gather information and views on supply and demand
 - ◁ Stage C: Assess the supply and demand information and views
 - ◁ Stage D: Develop the Strategy
 - ◁ Stage E: Deliver the Strategy and keep it robust and up to date
- ◀ Steering group - councils, Sport England, all relevant NGBs.
- ◀ One Central Lancashire report but with sub areas created within each authority allowing for a more localised analysis.
- ◀ Overview of strategic issues which permeate local authority boundaries.

Scope



PPS	Open space
<ul style="list-style-type: none">◀ Football (including 3G pitches)◀ Rugby union (including 3G pitches)◀ Rugby league◀ Cricket◀ Hockey◀ Tennis, bowls, athletics◀ Golf, cycling	<ul style="list-style-type: none">◀ Parks and gardens◀ Natural/semi-natural greenspace◀ Amenity greenspace◀ Provision for children/young people◀ Allotments◀ Cemeteries◀ Green corridors◀ Civic space

Central Lancashire key findings: open spaces



- ◀ 800 sites – equivalent to 2,281 hectares
- ◀ 74% assessed above quality thresholds
- ◀ 99% assessed above value thresholds
- ◀ Number of high quality sites = 16 Green Flag Awards
- ◀ Parks (77%) and outdoor networks (66%) visited more than once a month
- ◀ Quality, access and value all highly regarded
- ◀ Maintenance/improvements (56%) and cleanliness (49%) viewed important



High level findings:



- ◀ **Parks** - good levels of quantity and quality (e.g. Astley Park).
- ◀ Gaps in accessibility served by Cuerden Valley Park and Yarrow Valley Country Park (both Green Flag).
- ◀ Five Green Flag Award sites in total.
- ◀ **NSN** - quality & access good; slightly lower quantity in Chorley West (however some inaccessible sites with potential).
- ◀ Good levels of **play** provision (slight quantity shortfalls to Chorley East).
- ◀ **Allotments** good quality but shortfalls and waiting lists - three sites planned in Euxton, Croston and Adlington.

High level findings:



- ◀ **Parks** - good levels of quantity and accessibility.
- ◀ Some noticeably high quality (e.g. Avenham & Miller Parks, Ashton Park, Haslam Park) – six Green Flag Awards.
- ◀ **NSN** - quality & access good; quantity shortfalls in North West and South areas.
- ◀ Shortfall in quantity of **Amenity** in North West and South areas.
- ◀ Also minor accessibility gaps but served by Ashton Park, Haslam Park, Moor Park.
- ◀ Overall good quality of **play** – gap in provision to south area.
- ◀ **Allotment** quantity shortfall to North West. Waiting lists exist.

High level findings:

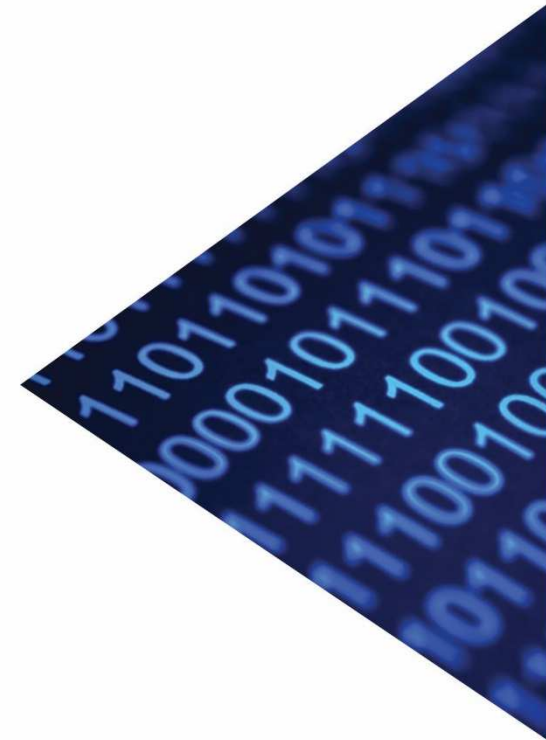


- ◀ **Parks** - good levels of quantity and quality (e.g. Worden Park).
- ◀ Gaps in accessibility to Eastern and Western areas; served by other forms of AGS and Cuerden Valley Park.
- ◀ Three Green Flag Award sites.
- ◀ **NSN** - quality & access good; Longton Brickcroft Nature Reserve.
- ◀ Although lower quantity in Penwortham and Western areas (but some inaccessible sites with potential).
- ◀ Excellent level of **amenity** and **play** provisions.
- ◀ **Allotments** good quality but shortfalls and waiting lists.

Setting provision standards



- ◀ **Quantity** - Hectares per 1,000 population. By typology and area. Informed by current provision / consultation responses.
- ◀ **Quality** - Green Flag pass mark 66% but locally derived quality ratings.
- ◀ **Accessibility** - Survey/consultation findings and best practice guidance from FIT etc to inform catchment mapping.



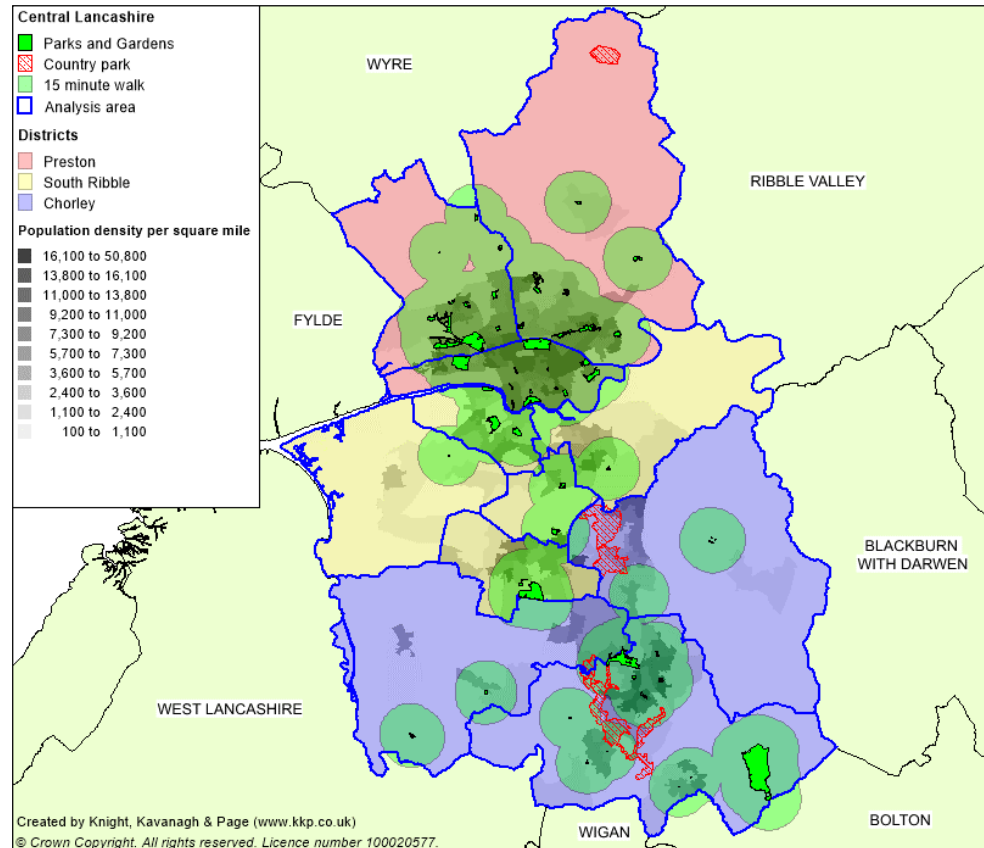
Applying standards



◀ Informs provision to:

- Protect
- Enhance
- Consider for alternative use

◀ Incorporating multifunctional/strategic roles



Recommendations



- ◀ Sites helping or with potential to serve areas identified as having catchment gaps should be recognised through opportunities for enhancement.
- ◀ Ensure low quality sites are prioritised for enhancement.
- ◀ Recognise areas with sufficient provision and how they may be able to meet other needs.
- ◀ Seek developer contributions to ensure new populations are served by sufficient provision (ensuring offsite contributions to enhancement of existing sites).



Central Lancashire key findings: PPS



- ◀ Football grass pitch shortfalls (esp. youth 11v11) due to quality
- ◀ 3G pitch shortfalls; 7 full size currently
- ◀ Cricket pitch shortfalls in Preston and South Ribble
- ◀ Adequate rugby union provision given WR 3G pitch
- ◀ Sufficient hockey provision but quality needs improving
- ◀ Significant latent demand for tennis; spare capacity at club sites
- ◀ Demand is generally being met for non pitch sports



High level findings: Chorley



- ◀ Football pitch quality issues at; Jim Fowlers Memorial Ground, Twin Lakes (Croston), King George V Field and Sandy Lane.
- ◀ Largest shortfall in 3G pitches; 4 full size currently.
- ◀ Need for new cricket provision in East Area.
- ◀ Rugby league pitch shortfalls linked to Chorley RUFC developing its home venue.
- ◀ Quality needs improving at 2 hockey pitches.
- ◀ Securing access to education sites.
- ◀ Multi sports hub development at West Way Playing Fields.
- ◀ Evidence to suggest a strategic need for a purpose built athletics facility.



High level findings: Preston



- ◀ Football pitch quality issues at; Ashton Park, Sherwood Park and BAC/EE.
- ◀ Potential development of football in Ashton Park linked to overall masterplan
- ◀ Cricket pitch shortfalls identified (3 sites overplayed). Fulwood & Broughton CC is developing a new square.
- ◀ Hockey pitch at Preston Sports Club poor quality.
- ◀ High demand for bowls and 12 sites are overplayed.
- ◀ High demand for informal tennis with new courts at Frenchwood Rec and Haslam Park.
- ◀ Need to resurface Preston Sports Arena (UCLAN) athletics track within the near future.
- ◀ BMX track at Fishwick Recreation Ground identified as poor quality.



High level findings: South Ribble



- ◀ Football pitch quality issues at; New Longton Sports & Social Club, New Longton Village Hall and Factory Lane (Cardinal Newman College).
- ◀ Penwortham Holme has not been used in the 2017/18 season due to quality issues, demand has spread out.
- ◀ Demand to develop a Hub site.
- ◀ Significant potential for securing access to education sites to address shortfalls.
- ◀ Large number of cricket sites overplayed, high demand and quality.
- ◀ Moss Side Recreation Ground is overplayed for rugby as it accommodates both codes.



PPS Vision



“To create high quality, sustainable outdoor sports facilities which meet community need, increase participation, help tackle health issues and provide accessible, inclusive activities for Central Lancashire residents as part of an active lifestyle.”



Strategy Aims



Aim 1

To **protect** the existing supply of playing pitches where it is needed for meeting current and future needs

Aim 2

To **enhance** playing fields, pitches and ancillary facilities through improving quality and management of sites

Aim 3

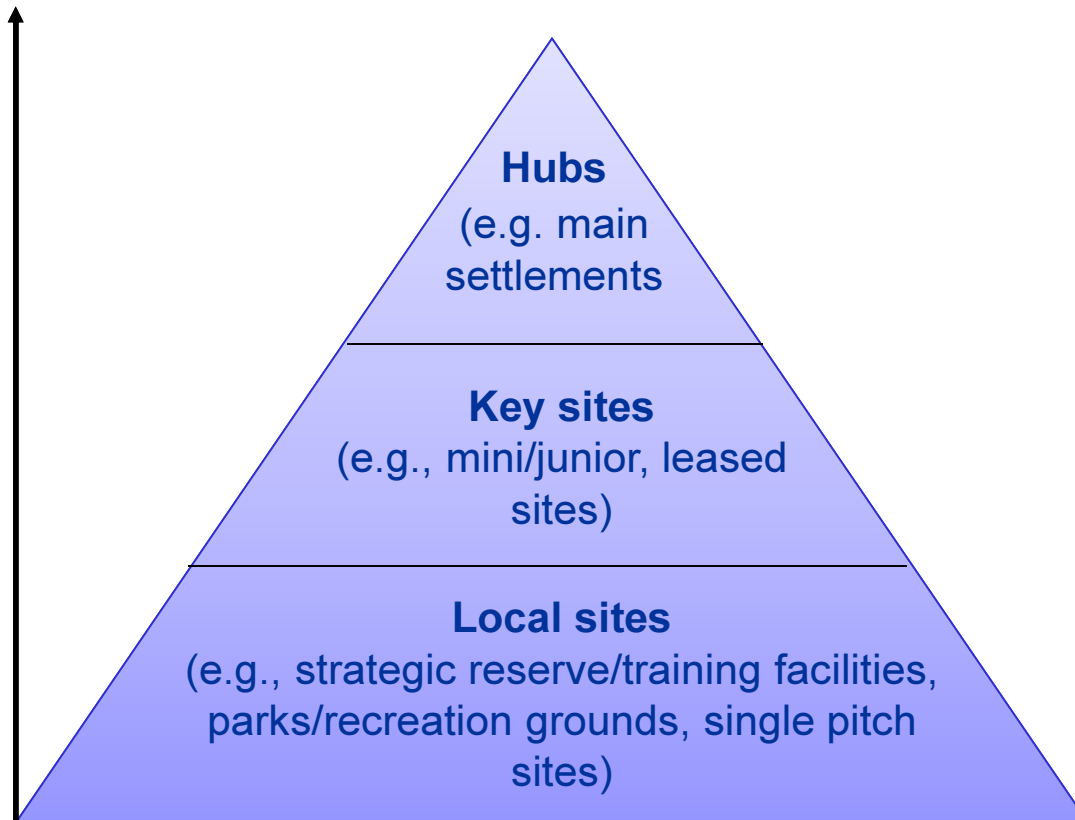
To **provide** new playing pitches where there is current or future demand to do so

Prioritising investment



The higher up the hierarchy, the site:

- More strategically significant, catering for wide range of sports/clubs
- Larger effective catchment
- Accessible via public transport
- Wider range of facilities
- May require on-site management



The lower down the hierarchy, the site:

- may be more locally significant
- Has a smaller effective catchment
- is smaller with a more limited facility range
- May just cater for one or two clubs
- Focused on need of local users/clubs
- Requires less intensive management

Recommendations



- ◀ Protect all existing outdoor sports facilities until all shortfalls are overcome.
- ◀ Improve quality of provision & ancillary facilities where necessary.
- ◀ Secure tenure for clubs.
- ◀ Work with schools to gain secured community access.
- ◀ Explore opportunities to increase 3G pitch provision across each authority, including potential conversion of some sand pitches to 3G.
- ◀ Improve the quality of hockey used pitches.
- ◀ Consider rationalisation of low value sites contributions can go towards creating larger, better quality, multi-pitch Hub sites.
- ◀ Work in partnership with stakeholders to secure funding e.g. FA, EH, RFU etc
- ◀ Secure developer contributions from housing growth (framework provided).

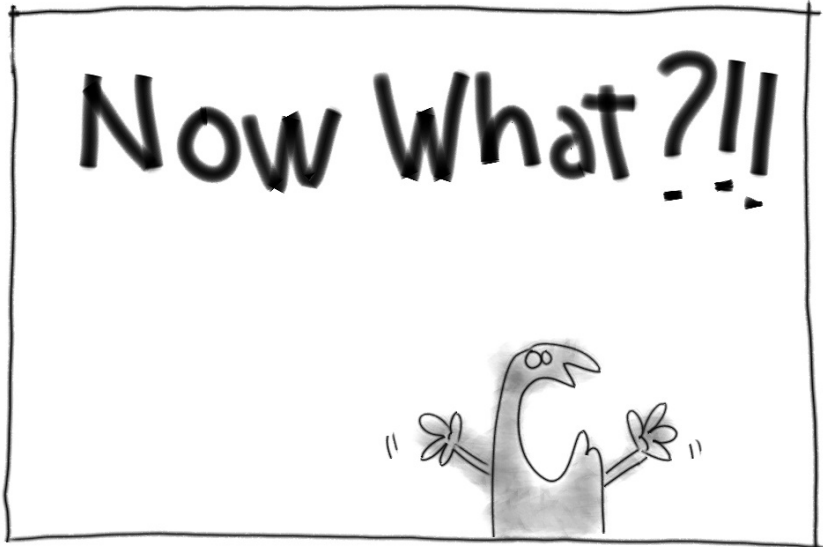
Action plans

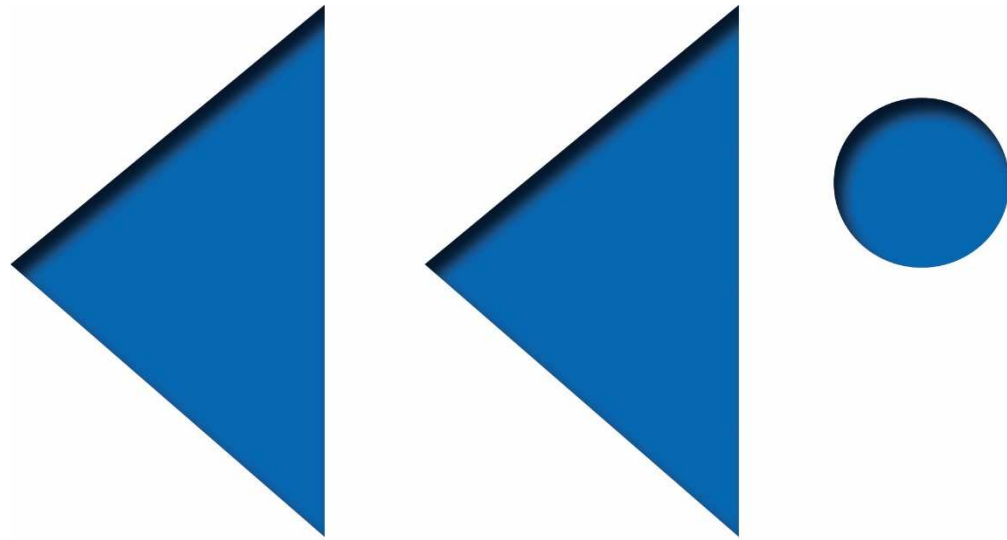


Chorley Central Action Plan

Site ID	Site	Sport	Management	Current status	Recommended actions	Lead Partners	Site hierarchy tier	Priority	Timescales ¹⁹	Cost ²⁰	Aim
170	Adlington Cricket Club	Cricket	Sports Club	A good quality grass cricket square with 13 wickets accompanied by an NTP. Square is used to capacity at peak time. Site is owned by Adlington CC.	Sustain square quality through enhanced levels of maintenance and remedial work.	Sports Club ECB	Local Site	Low	L	L	Protect
171	Albany Science College	Football	Education	One adult pitch and one youth 9v9 pitch both of which are standard quality. Spare capacity has been discounted due to unsecure tenure. Adult pitch is used by the community where as the youth 9v9 pitch is not.	Sustain pitch quality through regular enhanced maintenance and remedial work to better sustain levels of school and community use. Pursue security of tenure for any future users via community use agreement.	Education LFA FF	Local Site	Low	S	L	Protect Enhance
		Cricket	Education	One standalone NTP.	Retain for school use.	Education ECB		Low	L	L	
		Tennis	Education	Six poor quality macadam courts which are not floodlit and are unavailable for community use.	Seek to improve court quality through resurfacing.	LTA Education		Low	S	L	
172	Anderton Primary School	Football	Education	One poor quality mini 7v7 pitch which is available for community use but is currently unused. Spare capacity is discounted due to unsecure tenure.	Improve quality to better sustain curricular and extracurricular demand.	Education LFA FF	Local Site	Low	S	L	Enhance
173	Anderton St Joseph's Bowling Club	Bowls	Sports Club	One good quality bowling green which is the home venue of Anderton St Joseph's BC. The Club is responsible for managing and maintaining the site. The green has some capacity for additional demand, although this is minimal.	Sustain the green quality by continuing with the current maintenance regime and maximise use.	Sports Club BCGBA	Local Site	Low	S	L	Protect
174	Astley Park	Football	Chorley Council	Two adult, two youth 11v11 and one youth 9v9 pitch all of which are poor quality. Spare capacity discounted due to unsecure tenure. Site is accompanied by standard quality ancillary facilities. Site has been identified for potential investment through S106 monies.	Improve pitch quality through either enhanced levels of maintenance or implementation of a drainage system based upon strategic evidence (For example a Pitch Improvement Programme Report) This can be obtained through using potential investment from available S106 monies.	Chorley Council LFA FF	Key Centre	Medium	S	L - M	Protect Enhance
		Bowls	Chorley Council	Two good quality bowling greens, which are managed and maintained by Chorley Council. Low membership across the two greens.	The viability of the greens should be examined given the low membership of Astley Park BC.	Chorley Council BCGBA		Medium	S	L	
		Tennis	Chorley Council	Three standard quality macadam courts which are available for community use but are not floodlit.	Prolong court lifespan through a robust maintenance plan. Explore potential options to increase community usage by creating a more efficient access system such as Clubspark in order to actualise latent demand.	LTA Chorley Council		Medium	S	L	
176	Bay Horse Pub, Heath Charnock	Bowls	Commercial	One good quality bowling green that is the home venue of St Paul's Church BC. The green has some capacity for additional demand, although this is minimal.	Sustain green quality by continuing with the current maintenance regime and maximise use.	Commercial BCGBA	Local Site	Low	S	L	Protect

What happens now?





KNIGHT, KAVANAGH & PAGE